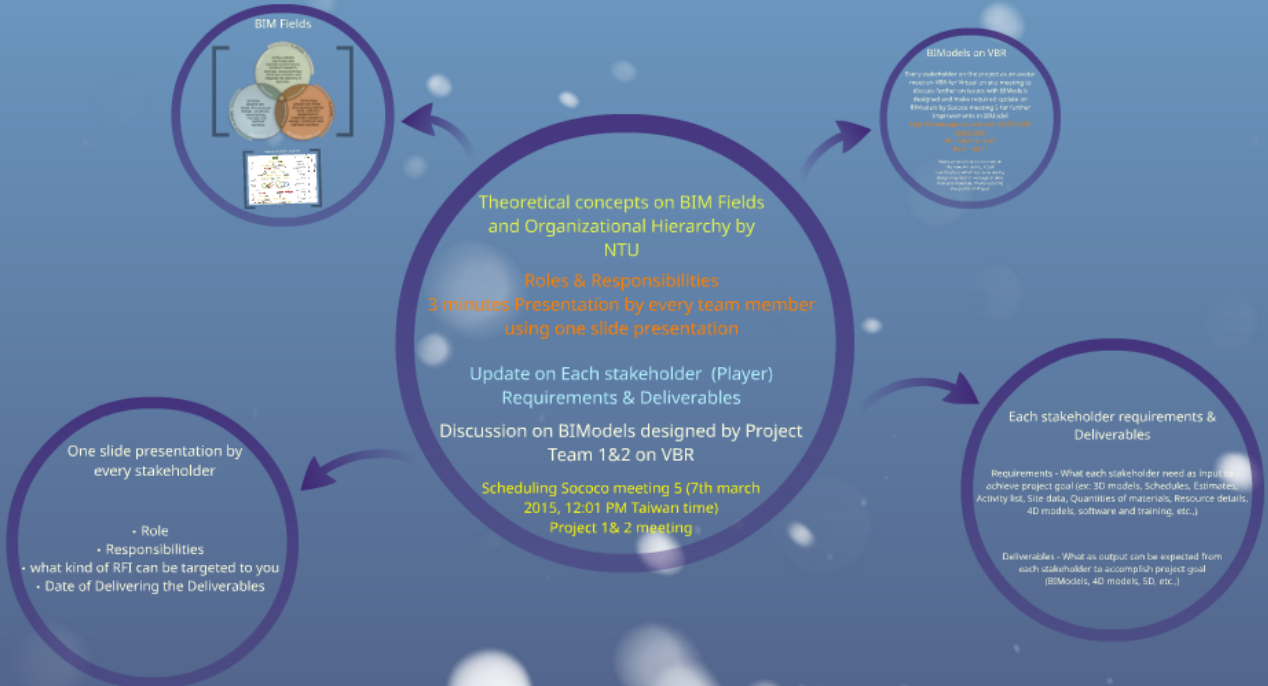


Sococo Meeting 4 Global Team 11

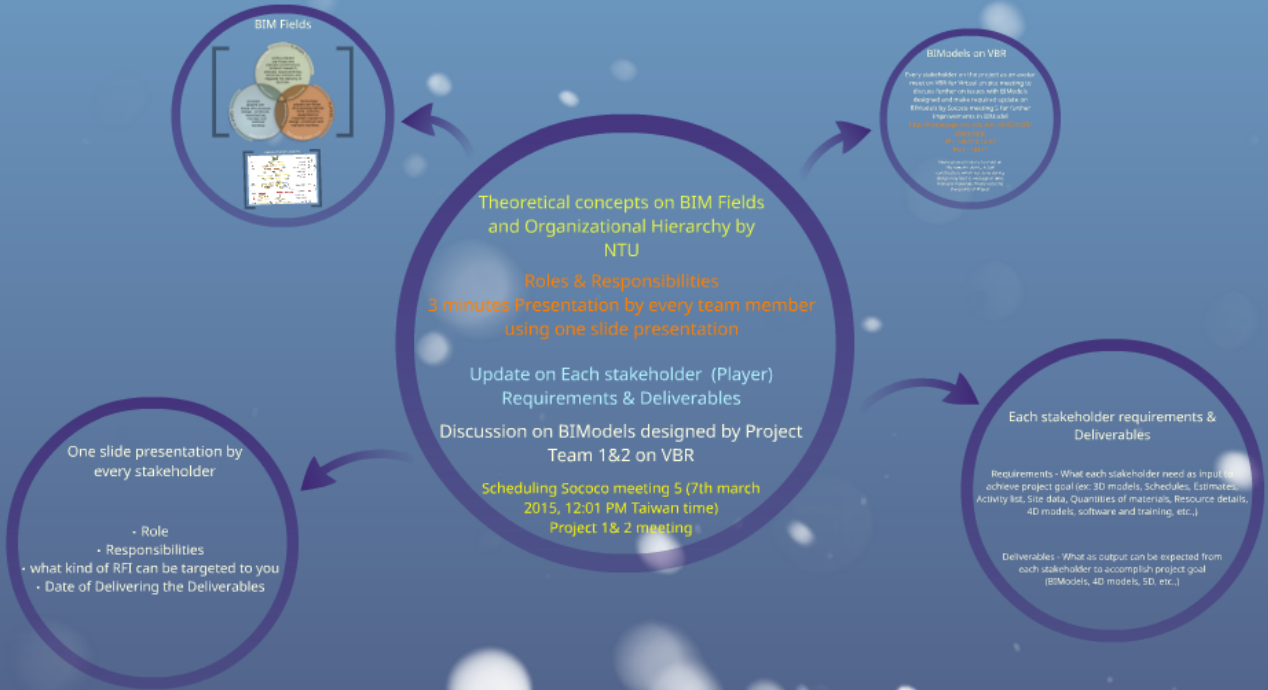
On 28th feb 2014
12:01 PM - 1:45 PM

- Attendees:**
- Amarnath C B
 - Jeffery Tsai
 - Syed Masthan Vali
 - Abdulrahman Alshahrani
 - Cameron Worley
 - kelby mccorkle



Sococo Meeting 4 Global Team 11

On 28th feb 2014
12:01 PM - 1:45 PM



Attendees:

- Amarnath C B
- Jeffery Tsai
- Syed Masthan Vali
- Abdulrahman Alshahrani
- Cameron Worley
- kelby mccorkle

Theoretical concepts on BIM Fields
and Organizational Hierarchy by
NTU

Roles & Responsibilities

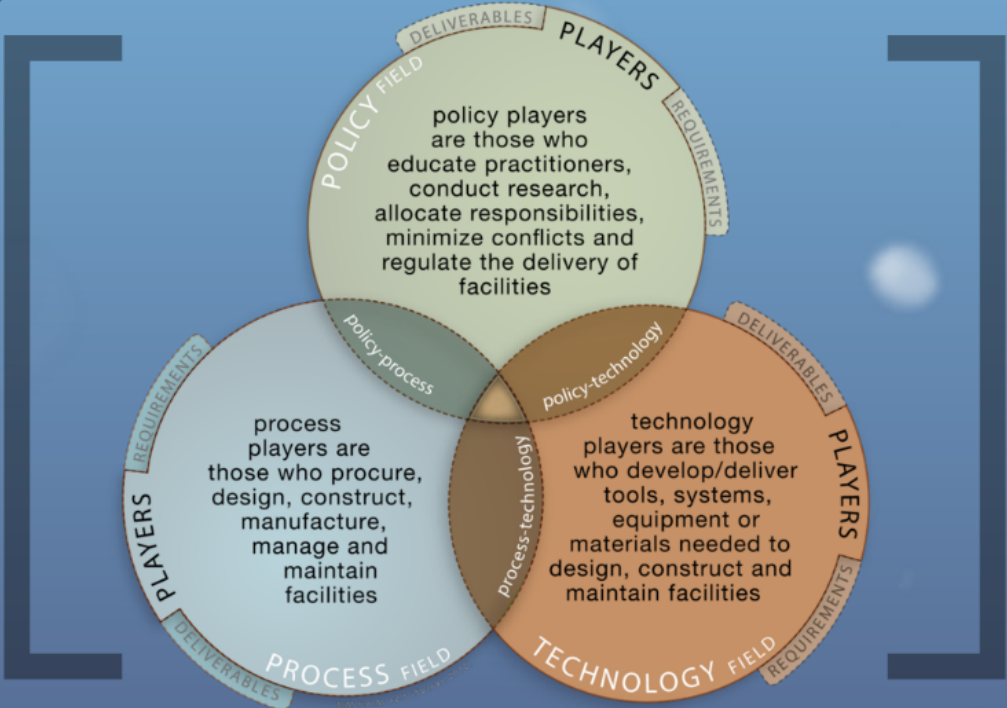
3 minutes Presentation by every team member
using one slide presentation

Update on Each stakeholder (Player)
Requirements & Deliverables

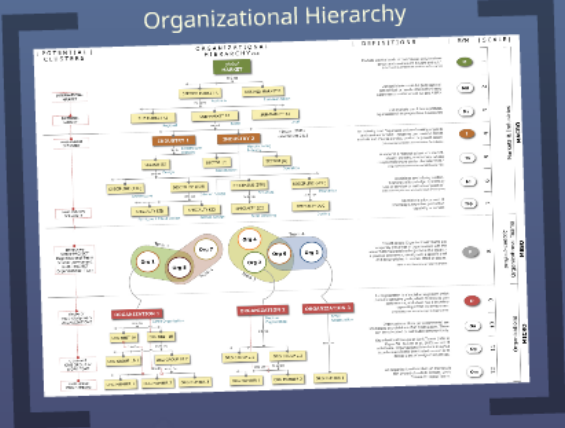
Discussion on BIModels designed by Project
Team 1&2 on VBR

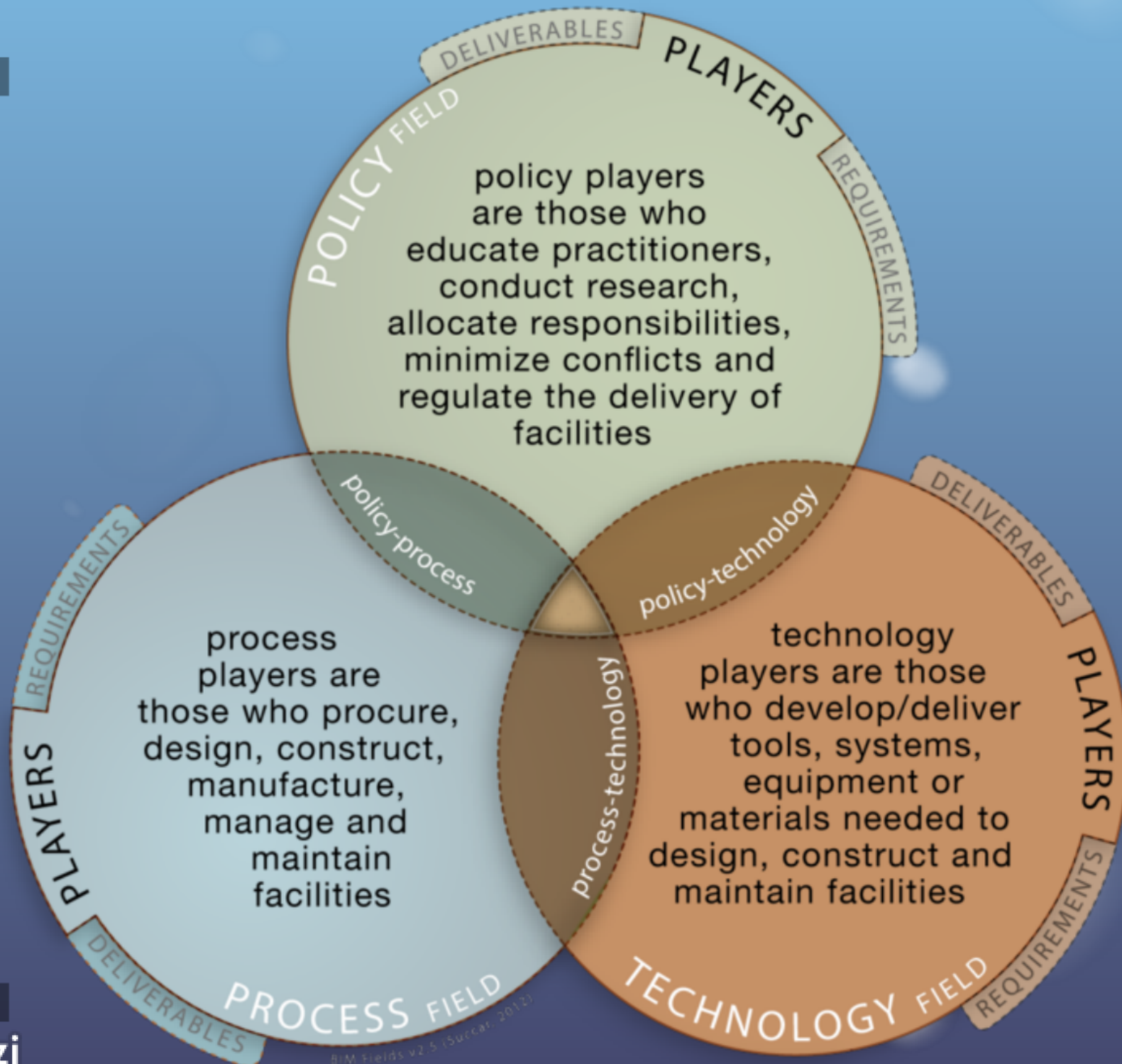
Scheduling Sococo meeting 5 (7th march
2015, 12:01 PM Taiwan time)
Project 1 & 2 meeting

BIM Fields



Organizational Hierarchy





BIM Fields v2.5 (Surcar, 2012)

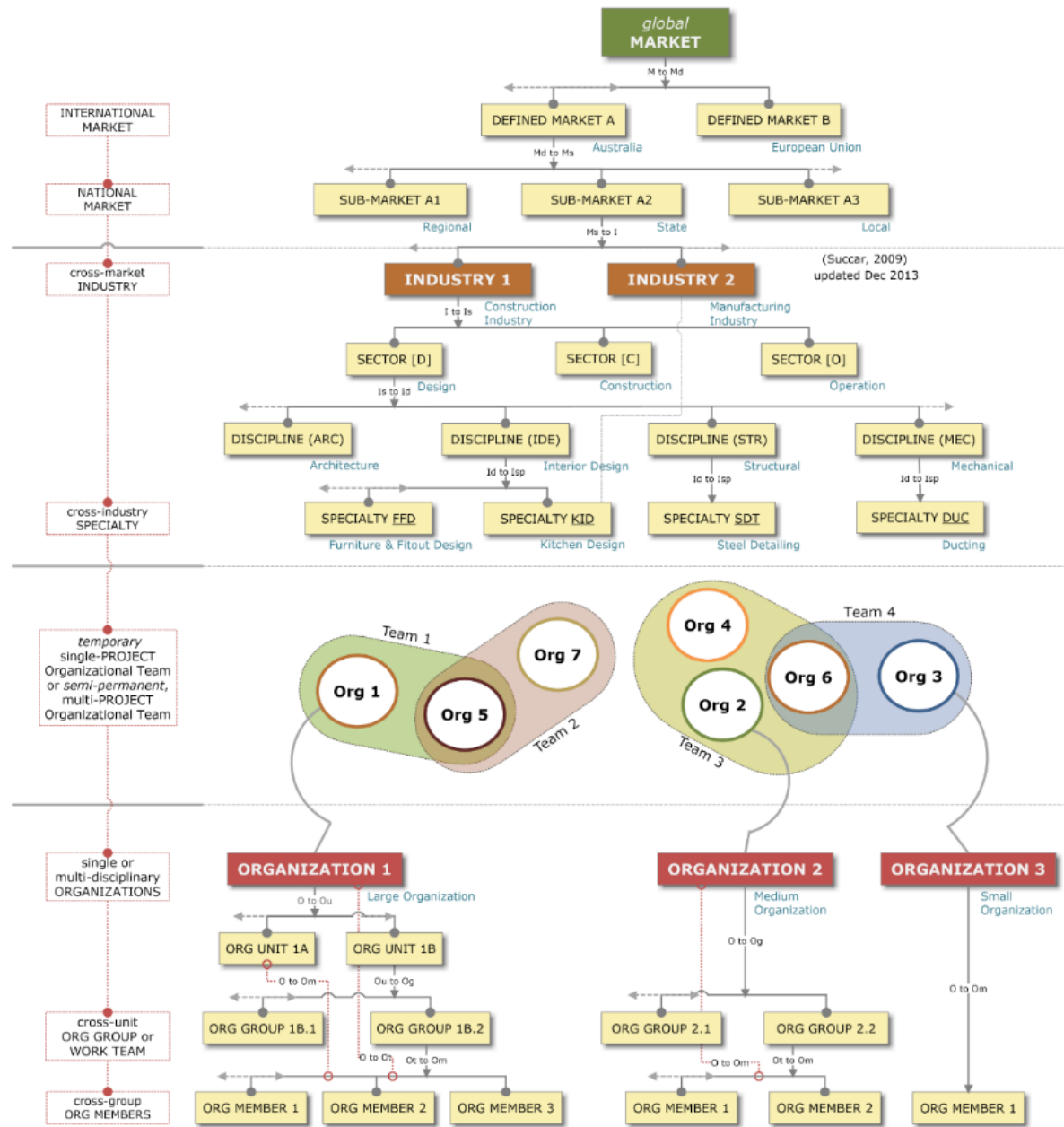
Organizational Hierarchy

POTENTIAL CLUSTERS

ORGANIZATIONAL HIERARCHY v2.0

DEFINITIONS

SYM | SCALE



Markets are the 'world of commercial activity where goods and services are bought and sold'.
<http://wordnet.princeton.edu/perl/webwn?&=market>

Defined Markets can be geographical, geopolitical or resultant from multi-party agreements similar to NAFTA and ASIAN

Sub-markets can follow a political, organizational or geographical boundaries

An industry is an "organized action of making of goods and services for sale". Industries can traverse across markets and may be service, product or project-based.
<http://wordnet.princeton.edu/perl/webwn?&=industry>

A sector is a "distinct subset of a market, society, industry, or economy, whose components share similar characteristics."
<http://www.investorwords.com/4430/sector.html>

Disciplines are industry sectors, "branches of knowledge, systems of rules of conduct or methods of practice".
<http://wordnet.princeton.edu/perl/webwn?&=discipline>

Specialty is a focus area of knowledge, expertise, production capability or service

Project-centric Organizational Teams are temporary groupings of organizations with the aim of fulfilling predefined objectives of a project - a planned endeavour, usually with a specific goal and accomplished in several steps or stages.
[refer to http://en.wiktionary.org/wiki/project](http://en.wiktionary.org/wiki/project)

An Organization is a 'social arrangement which pursues collective goals, which controls its own performance, and which has a boundary separating it from its environment'
[refer to http://en.wikipedia.org/wiki/Organization](http://en.wikipedia.org/wiki/Organization)

Organizational Units (or Departments) are specialized sub-divisions of an organization. These can be collocated or distributed geographically.

Organizational Groups or Work Teams (refer to Paper A6 - Succar et al., 2013) consist of Individuals / Organizational Members assigned to perform a specific time-limited mission or to deliver a set of assigned objectives.

An Organizational Member (an Individual) can be part of multiple Groups, Work Teams or Project Teams.

M

Md

Ms

I

Is

Id

Isp

P

O

Ou

Og

Om

1

2

3

4

5

6

7

8

9

10

11

12

Markets & Industries
MACRO


project-centric
Organizational Teams
MESO

Organizations
MICRO



One slide presentation by
every stakeholder

- Role
- Responsibilities
- what kind of RFI can be targeted to you
 - Date of Delivering the Deliverables



Each stakeholder requirements & Deliverables

Requirements - What each stakeholder need as input to achieve project goal (ex: 3D models, Schedules, Estimates, Activity list, Site data, Quantities of materials, Resource details, 4D models, software and training, etc.,)

Deliverables - What as output can be expected from each stakeholder to accomplish project goal (BIModels, 4D models, 5D, etc.,)

BIModels on VBR

Every stakeholder on the project as an avatar meet on VBR for Virtual on site meeting to discuss further on issues with BIModels designed and make required update on BIModels by Sococo meeting 5 for further improvements in BIModel

<http://homepage.ntu.edu.tw/~d03521025/client.html>

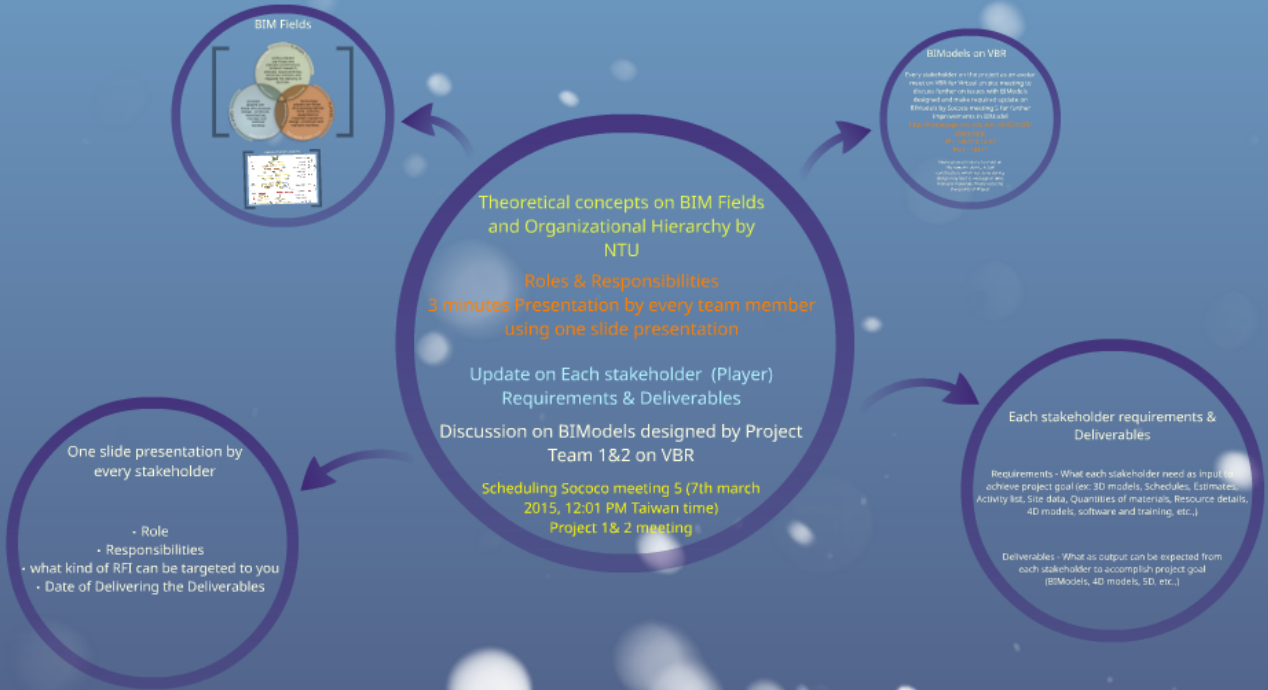
IP - 140.112.12.97

Port - 10111

Above process is done to avoid on site reworks during actual construction, which not done during design may lead to wastage of time, money & materials, finally reducing the quality of Project

Sococo Meeting 4 Global Team 11

On 28th feb 2014
12:01 PM - 1:45 PM



Attendees:

- Amarnath C B
- Jeffery Tsai
- Syed Masthan Vali
- Abdulrahman Alshahrani
- Cameron Worley
- kelby mccorkle